

■ **TWINflex Dual-line Divider**

✧ **Product Description**

TWINflex™ series dividers are suitable for small and medium-sized dual-line lubrication systems. As a core component, they can efficiently and accurately deliver the required amount of lubricant to different lubrication points, with a maximum working pressure of up to 250 bar.

This divider uses a common universal mounting base and a modular designed for the metering valves, allowing customers to freely choose and configure the dual-line divider according to the number of lubrication points.

The divider has two types of layout: 1) Bilateral outlet, with grease outlets distributed on both sides of the mounting base, up to 6 outlets; 2) Unilateral outlet, with grease outlets distributed on one side of the mounting base, up to 8 outlets. These two types have the same installation interface and are interchangeable. Customers can choose according to the different positions of the lubrication points.

This dual-line divider is well suited for the lubrication needs of construction machinery, port machinery, and other applications.



✧ **Technical Data**

<i>Quantity of Outlet</i>		1 ~ 8
<i>Displacement</i>	<i>Single Stroke</i>	0.09 ~ 3.5 cm <sup>3</sup>
	<i>Reciprocating Cycle</i>	0.18 ~ 7.0 cm <sup>3</sup>
<i>Working Pressure</i>		Max. 250bar
<i>Lubricant</i>		NLGI 0, 1, 2
<i>Working Temperature</i>		-40°C ~ +80°C
<i>Mounting</i>		Any position

✧ **Product Features**

1. Bilateral type: 1 ~ 6 outlets
2. Unilateral type: 1 ~ 8 outlets
3. Easy to maintain with low cost thanks to uniform and interchangeable interface for both types
4. 14 kinds of metering volumes for each outlet by selecting different combinations of two spacers.
5. Optional visual indicator for each outlet

■ **TWINflex Dual-line Divider Part Number**

✧ **TFB bilateral type**

**TFB - 6 - 9/7/7/5M/0/8**

TFB series dual-line divider

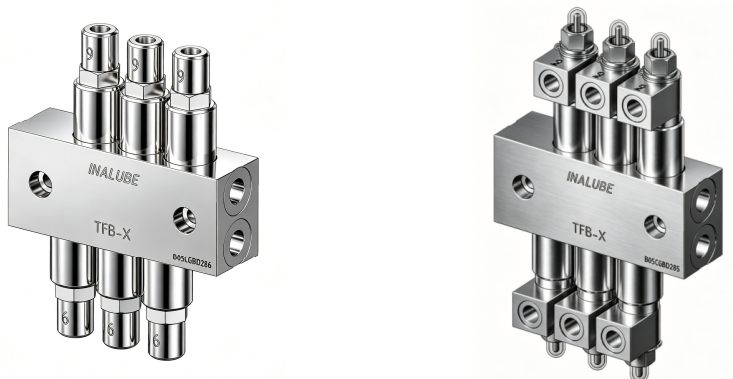
Quantity of outlet (metering valve)

- 2: 2 outlets manifold, valid for metering valves quantity 1, 2
- 4: 4 outlets manifold, valid for metering valves quantity 2, 3, 4
- 6: 6 outlets manifold, valid for metering valves quantity 3, 4, 5, 6
- 8: 8 outlets manifold, valid for metering valves quantity 4, 5, 6, 7, 8

Metering valve model <sup>1)</sup>

Mark		Single stroke (cm <sup>3</sup> /stroke)	Reciprocating cycle (cm <sup>3</sup> /cycle)	Metering valve position
Standard	Visual indicator			
1	1M	0.09	0.18	
2	2M	0.18	0.36	
3	3M	0.27	0.54	
4	4M	0.35	0.70	
5	5M	0.45	0.90	
6	6M	0.55	1.10	
7	7M	0.65	1.30	
8	8M	0.70	1.40	
9	9M	0.80	1.60	
X	XM	0.90	1.80	
10	10M	1.0	2.0	
15	15M	1.5	3.0	
25	25M	2.5	5.0	
35	35M	3.5	7.0	
0		No outlet (metering valve)		

1) The metering valves with or without visual indicator can be mixed in one TFB dual-line divider.



✧ **TFU unilateral type**

**TFU - 8 - 5/5/5/6M/0/7/4/8**

**TFU series dual-line divider**

**Quantity of outlet (metering valve)**

- 2: 2 outlets manifold, valid for metering valves quantity 1, 2
- 4: 4 outlets manifold, valid for metering valves quantity 3, 4
- 6: 6 outlets manifold, valid for metering valves quantity 5, 6
- 8: 8 outlets manifold, valid for metering valves quantity 7, 8

**Metering valve model <sup>1)</sup>**

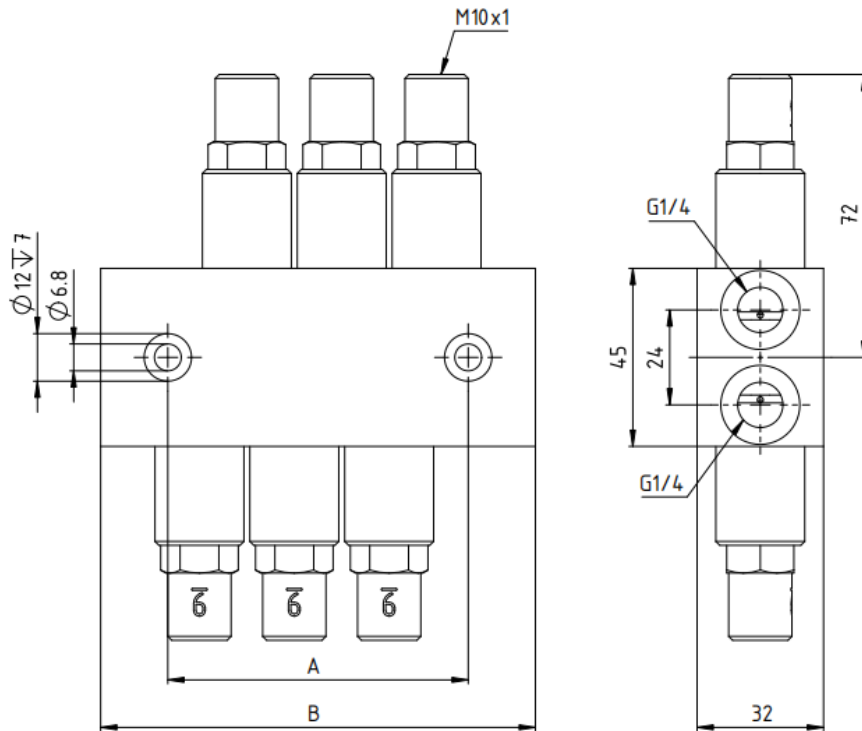
Mark		Single stroke (cm <sup>3</sup> /stroke)	Reciprocating cycle (cm <sup>3</sup> /cycle)	Metering valve position
Standard	Visual indicator			
1	1M	0.09	0.18	
2	2M	0.18	0.36	
3	3M	0.27	0.54	
4	4M	0.35	0.70	
5	5M	0.45	0.90	
6	6M	0.55	1.10	
7	7M	0.65	1.30	
8	8M	0.70	1.40	
9	9M	0.80	1.60	
X	XM	0.90	1.80	
10	10M	1.0	2.0	
15	15M	1.5	3.0	
25	25M	2.5	5.0	
35	35M	3.5	7.0	
0		No outlet (metering valve)		

1) The metering valves with or without visual indicator can be mixed in one TFU dual-line divider.



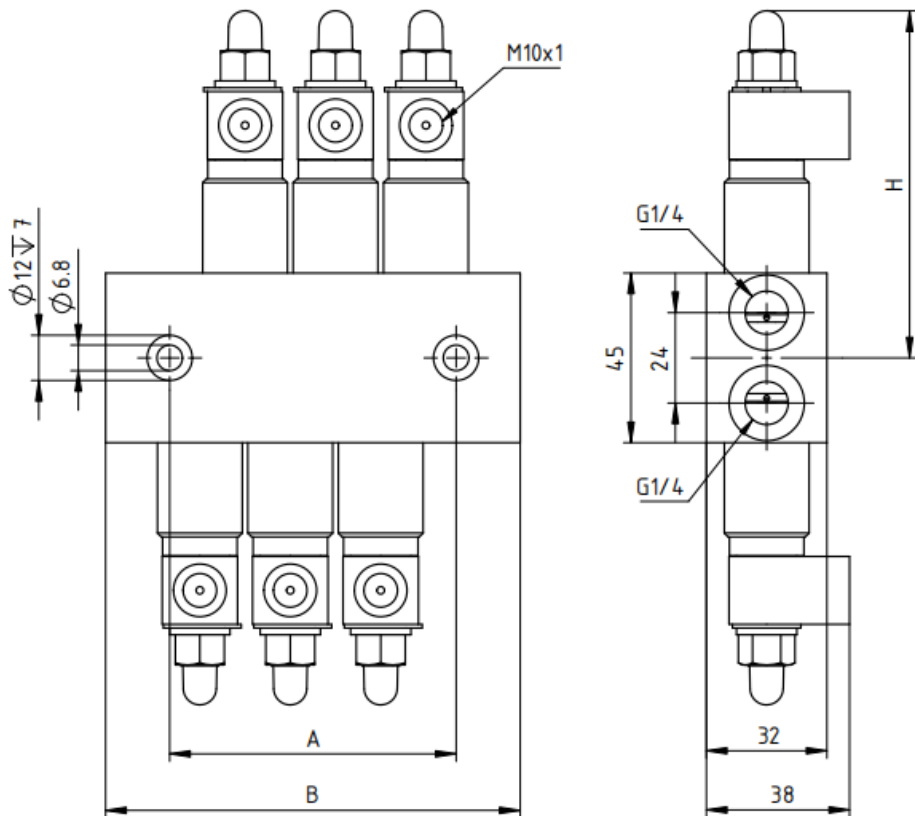
■ **TFB Bilateral Dual-line Divider Dimension**

◇ **Standard**



Model	Type	Qty of Outlet	Inlet Thread	Outlet Thread	Dimension (mm)	
					A	B
TFB-2-/	Standard	1, 2	G1/4	M10x1	28	62
TFB-4-/	Standard	2, 3, 4			52	86
TFB-6-/	Standard	3, 4, 5, 6			76	110
TFB-8-/	Standard	4, 5, 6, 7, 8			100	134

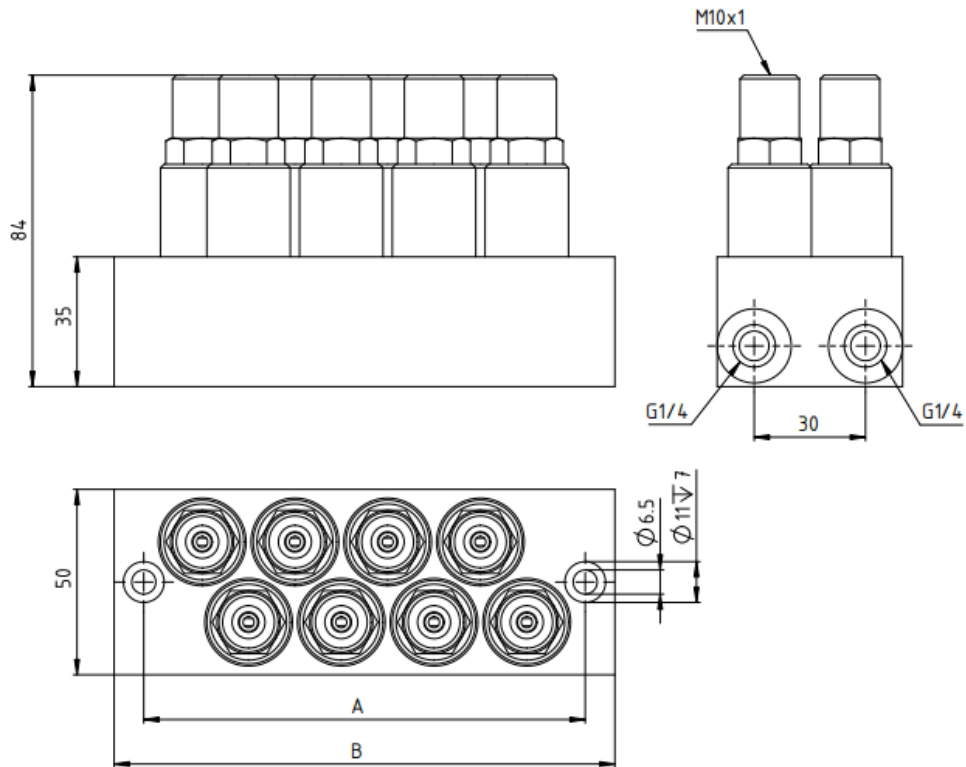
✧ **Visual indicator**



Model	Type	Mark	Qty of Outlet	Inlet Thread	Outlet Thread	Dimension (mm)		
						A	B	H
TFB-2-/	Visual indicator	1, 2, 3, 4, 5, 6, 7, 8, 9, X	1, 2	G1/4	M10x1	28	62	92
		10, 15, 25, 35	1, 2			28	62	122
TFB-4-/	Visual indicator	1, 2, 3, 4, 5, 6, 7, 8, 9, X	2, 3, 4			52	86	92
		10, 15, 25, 35	2, 3, 4			52	86	122
TFB-6-/	Visual indicator	1, 2, 3, 4, 5, 6, 7, 8, 9, X	3, 4, 5, 6			76	110	92
		10, 15, 25, 35	3, 4, 5, 6			76	110	122
TFB-8-/	Visual indicator	1, 2, 3, 4, 5, 6, 7, 8, 9, X	4, 5, 6, 7, 8			100	134	92
		10, 15, 25, 35	4, 5, 6, 7, 8			100	134	122

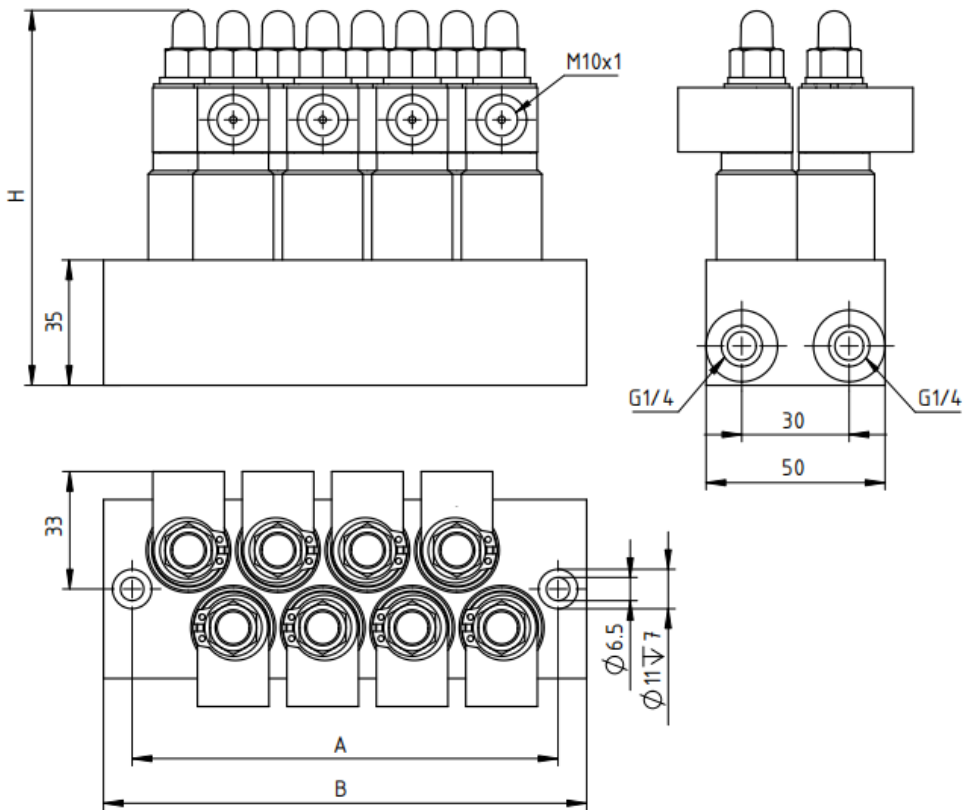
■ **TFU Unilateral Dual-line Divider Dimension**

◇ **Standard**



Model	Type	Qty of Outlet	Inlet Thread	Outlet Thread	Dimension (mm)	
					A	B
TFU-2-/	Standard	1, 2	G1/4	M10x1	44	60
TFU-4-/	Standard	3, 4			69	85
TFU-6-/	Standard	5, 6			94	110
TFU-8-/	Standard	7, 8			119	135

✧ Visual indicator



Model	Type	Mark	Qty of Outlet	Inlet Thread	Outlet Thread	Dimension (mm)		
						A	B	H
TFU-2-/	Visual indicator	1, 2, 3, 4, 5, 6, 7, 8, 9, X	1, 2	G1/4	M10x1	44	60	105
		10, 15, 25, 35	1, 2			44	60	135
TFU-4-/	Visual indicator	1, 2, 3, 4, 5, 6, 7, 8, 9, X	3, 4			69	85	105
		10, 15, 25, 35	3, 4			69	85	135
TFU-6-/	Visual indicator	1, 2, 3, 4, 5, 6, 7, 8, 9, X	5, 6			94	110	105
		10, 15, 25, 35	5, 6			94	110	135
TFU-8-/	Visual indicator	1, 2, 3, 4, 5, 6, 7, 8, 9, X	7, 8			119	135	105
		10, 15, 25, 35	7, 8			119	135	135

**Statement:**

Without permission, all or part of the contents in this manual shall not be quoted or copied. We have tried our best to ensure that the contents in this manual are accurate. Our company does not assume any direct, indirect or joint liability for the use of any technology and related products mentioned in this manual without our approval.

Publication No.: INALUBE-TWINflex-01

Version: 1.0

Date: 2026.03

**Shanghai INA Machinery Science & Technology Co., Ltd**

Room 201, Building D, No.555 Wanfang Road, Minhang District, Shanghai, China

Tel.: +86 21 2042 2806

Mobile: +86 187 1781 3303

Email: sales@inalube.com

Website: www.inalube.com