

## ■ MEP Multi-line Lubrication Pump Unit



### ◇ Product Description

MultiExpert™ series electric multi-line pump unit is a multi-plunger working pump with a maximum operating pressure of 350 bar. This pump is widely used in various machinery and equipment sectors such as metallurgy, mining, port machinery, forging, rubber and plastic, building materials, and lifting, as well as in special application areas like ships and ship locks.

The multi-line lubrication pump has up to 15 outlets to choose, and the displacement of each outlet can be adjusted by regulating the penetration amount of the screw sleeve.

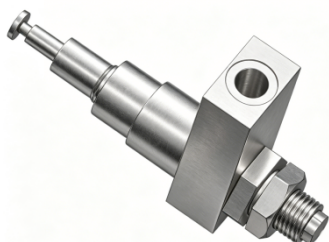
### ◇ Technical Data

<i>Power Supply</i>	AC 380V/50 Hz
<i>Rated Power</i>	0.37 kW
<i>Power Socket</i>	Wiring connection
<i>IP Class</i>	IP 55
<i>Qty. of Pump Element</i>	15
<i>Port Thread</i>	M22x1.5
<i>Working Pressure</i>	Max. 350 bar
<i>Tank Capacity</i>	10, 30 L
<i>Refilling Port</i>	Top lid
<i>Lubricant</i>	NLGI 0, 1, 2
<i>Working Temperature</i>	-20 °C ~ +70 °C
<i>Mounting</i>	Vertical

### ◇ Product Features

1. Strong and stable power: AC motor.
2. Suitable for harsh working conditions: maximum working pressure up to 350 bar.
3. Die-cast aluminum alloy pump body: increased the pump strength.
4. Maximum 15 outlets and adjustable pump element: providing more pump elements combination and lubrication circuits with different grease consumption needs.

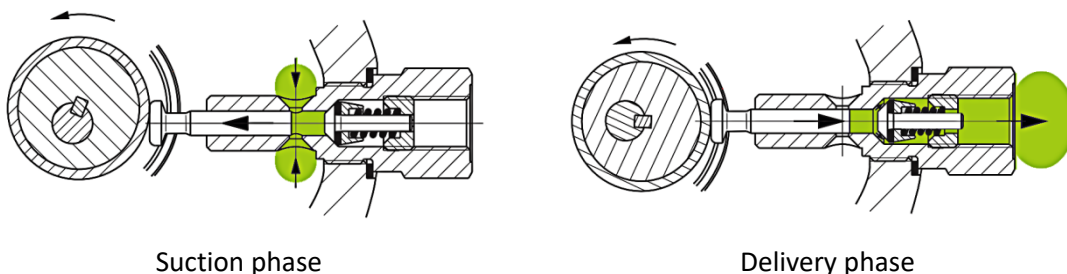
## ■ IBY-7A Pump Element



### ◇ Product Description

The IBY-7A pump elements is all plunger-type part which are dragging by eccentric wheel. The pump element has adjusting screw to adjust the displacement of each stroke. It can conveniently adjust the grease output during the operation of the lubrication system to meet needs. It's designed with a simple structure and easy to install and replace.

### ◇ Work Principle



### ◇ Technical Data

Model	Type	Reset Force	Displacement (cm <sup>3</sup> /stroke)	Max. Working Pressure (bar)	Mounting Thread	Outlet
IBY-7A	Adjustable	Dragging	0.06 ~ 0.23	350	M22x1.5	G 1/4

## ■ MEP Multi-line Lubrication Pump Part Number

**MEP15 30 N R1 X9 A38**

**MultiExpert 15 series pump station**

**Tank capacity**

10: 10L

30: 30L

**Low level alarm**

N: No

L: Yes

LV: Yes, with 5m cable

**Gearbox ratio**

R1: 50:1

R2: 100:1

**Quantity of X-7A pump element**

X0: No pump element installed

X1: 1 pump element installed, displacement of each outlet: 0.06 ~ 0.23 cm<sup>3</sup>/stroke

X2: 2 pump element installed, displacement of each outlet: 0.06 ~ 0.23 cm<sup>3</sup>/stroke

X3: 3 pump element installed, displacement of each outlet: 0.06 ~ 0.23 cm<sup>3</sup>/stroke

X4: 4 pump element installed, displacement of each outlet: 0.06 ~ 0.23 cm<sup>3</sup>/stroke

X5: 5 pump element installed, displacement of each outlet: 0.06 ~ 0.23 cm<sup>3</sup>/stroke

X6: 6 pump element installed, displacement of each outlet: 0.06 ~ 0.23 cm<sup>3</sup>/stroke

X7: 7 pump element installed, displacement of each outlet: 0.06 ~ 0.23 cm<sup>3</sup>/stroke

X8: 8 pump element installed, displacement of each outlet: 0.06 ~ 0.23 cm<sup>3</sup>/stroke

X9: 9 pump element installed, displacement of each outlet: 0.06 ~ 0.23 cm<sup>3</sup>/stroke

X10: 10 pump element installed, displacement of each outlet: 0.06 ~ 0.23 cm<sup>3</sup>/stroke

X11: 11 pump element installed, displacement of each outlet: 0.06 ~ 0.23 cm<sup>3</sup>/stroke

X12: 12 pump element installed, displacement of each outlet: 0.06 ~ 0.23 cm<sup>3</sup>/stroke

X13: 13 pump element installed, displacement of each outlet: 0.06 ~ 0.23 cm<sup>3</sup>/stroke

X14: 14 pump element installed, displacement of each outlet: 0.06 ~ 0.23 cm<sup>3</sup>/stroke

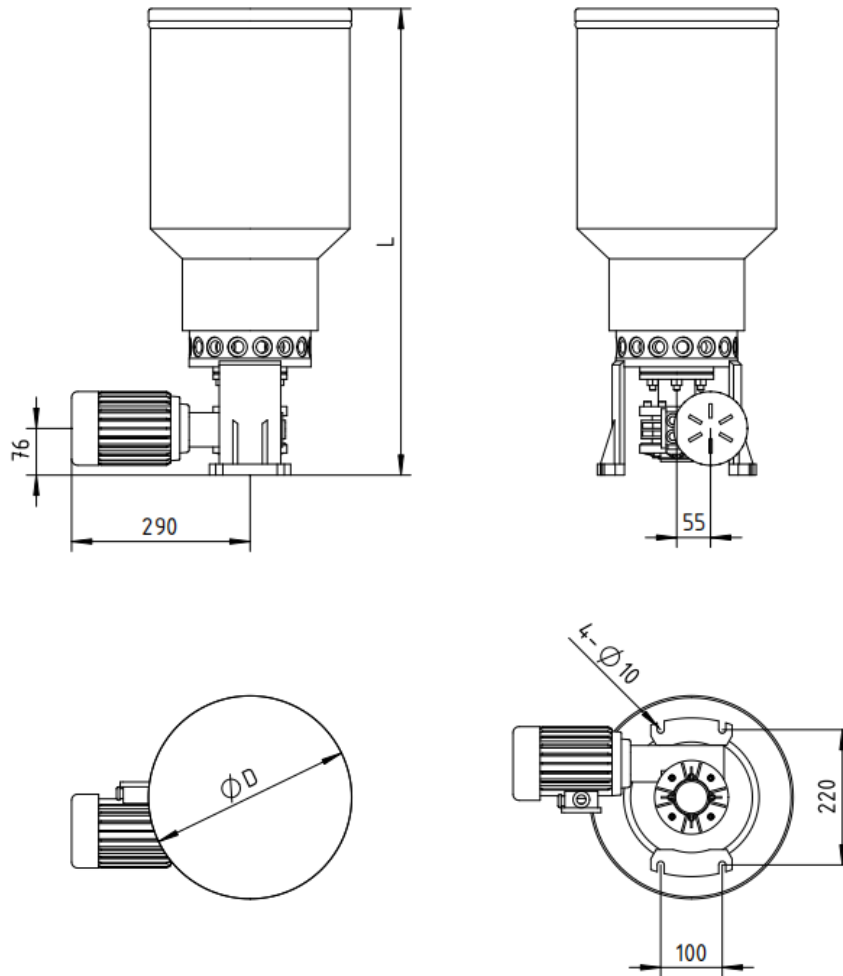
X15: 15 pump element installed, displacement of each outlet: 0.06 ~ 0.23 cm<sup>3</sup>/stroke

**Power supply**

A38: AC 380V / 50Hz, 1380 rpm, cable gland

A38V: AC 380V / 50Hz, 1380 rpm, cable gland, with 5m cable

## MEP Multi-line Lubrication Pump Unit Dimension



Model	Power Supply	Tank Capacity (L)	L (mm)	$\phi D$ (mm)
MEP1510 ...	AC 380V/50Hz	10	480	220
MEP1530 ...	AC 380V/50Hz	30	800	330

## Statement:

Without permission, all or part of the contents in this manual shall not be quoted or copied. We have tried our best to ensure that the contents in this manual are accurate. Our company does not assume any direct, indirect or joint liability for the use of any technology and related products mentioned in this manual without our approval.

Publication No.: INALUBE-MultiExpert-01

Version: 1.0

Date: 2026.03

## Shanghai INA Machinery Science & Technology Co., Ltd

Room 201, Building D, No.555 Wanfang Road, Minhang District, Shanghai, China

Tel.: +86 21 2042 2806

Mobile: +86 187 1781 3303

Email: sales@inalube.com

Website: www.inalube.com