

■ **LEP Dual-line Lubrication Pump Unit**

◇ **Product Description**



LUBETM dual-line pump unit is a kind of low-cost but high-quality pump unit which is being used in construction machinery, wind energy and general machinery widely.

This pump unit has a mechanical directional valve integrated plunger direction change sensor. It's easy to connect the dual-line dividers directly. By detecting the number of sensor activation, the pump unit can accurately control the grease output volume to meet the lubrication points' needs. The applicable lubricant viscosity can be as high as NLGI 2 grease.

Each lubrication pump can have 2 pump elements installed with total displacement of 12.0 cm³/min, forming 1 dual-line lubrication system.

◇ **Product Features**

1. Flexible power supply: either DC 24V or AC 230V/50Hz.
2. Integrated mechanical directional valve: easy to use and maintenance.
3. Higher protection class: IP 66.
4. High-performance plastics plus die-cast aluminum alloy pump body: reduces overall weight but increases the pump strength.
5. The wider temperature tolerance range improves the pump's operating capability.

◇ **Technical Data**

<i>Power Supply</i>	DC 24 V or AC 220V/50 Hz	<i>Power Socket</i>	DIN 43650 A
<i>Rated Power</i>	< 100 W	<i>Signal Socket</i>	IEC 61076-2-101-A, 4 P, F
<i>Pump Delivery</i>	12.0 cm ³ /min	<i>Refilling Port</i>	DIN 71412 A and/or top lid
<i>Outlet Thread</i>	2 x G 1/4	<i>IP Class</i>	IP 66
<i>Tank Capacity</i>	4, 6, 8, 10 L	<i>Lubricant</i>	NLGI 0, 1, 2
<i>Directional Valve</i>	130 ~ 250 bar adjustable, preset 150 bar	<i>Working Temperature</i>	-41 °C ~ +70 °C
<i>Valve Sensor</i>	DC 24V, PNP NO	<i>Mounting</i>	Vertical

■ **LEP Dual-line Lubrication Pump Part Number**

LEP21 3 D GL CH CC D24

LUBEite 21 series pump station

Tank capacity

- 2: 4L
- 2P: 6L
- 3: 8L
- 10: 10L

Pump type

- D: Dual-line pump unit
- DT: Dual-line pump unit with top lid

Low level alarm

- GL: DC 24V, PNP NC
- GN: No

Controller type ¹⁾

- C0: No controller integrated
- CH: Controller integrated, unit of interval time is Hour
- CM: Controller integrated, unit of interval time is Minute

Signal and cable code

Refer to following table

Power supply

- D24: DC 24V, power socket (DIN 43650A)
- D24V: DC 24V, power socket (DIN 43650A), with 5m cable
- A23: AC 230V / 50Hz, power socket (DIN 43650A)
- A23V: AC 230V / 50Hz, power socket (DIN 43650A), with 5m cable

1) When selecting "C0" controller type, then directional valve will not install the valve sensor.

Signal and cable code explanation

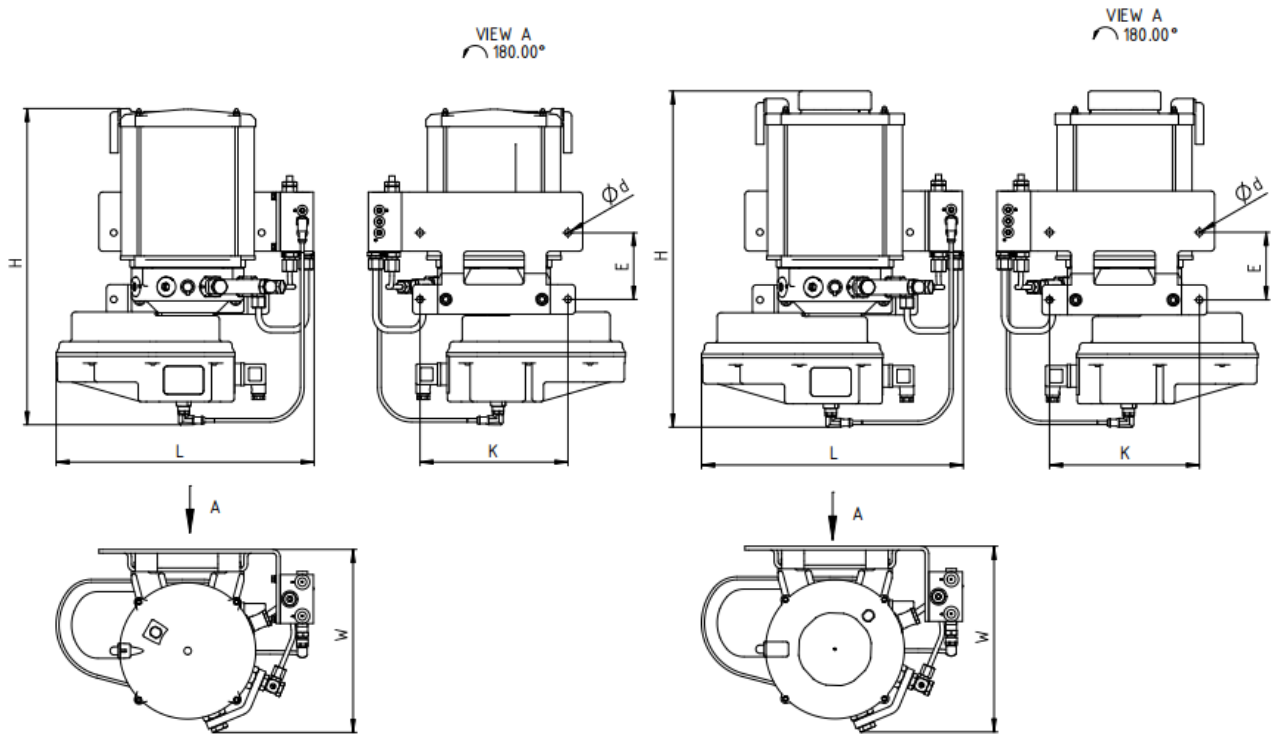
The external signal cable kit has two options and they are mutually exclusive. All external signal cables are 5m length.

All signal sockets in pump unit are compliant with IEC 61076-2-101-A (M12x1, 4 pins, female).

Controller		Low level sensor		Directional valve sensor signal to controller	External signal interaction			External signal cable kit	
		No	Yes		Remote alarm (NO)	Remote startup	Modbus	No kit code	Kit code
Integrated	Signal Code		Signal to controller	Signal to customer					
No (C0)	0	X						0	
			X					1	
Yes (CH/CM)	C	X		X				C	
			X		X				
	F	X		X	X			0	F
			X		X	X			
	H	X		X		X		0	H
			X		X		X		
	J	X		X			X	0	J
			X		X		X		
	K	X		X	X	X		0	K
			X		X	X	X		

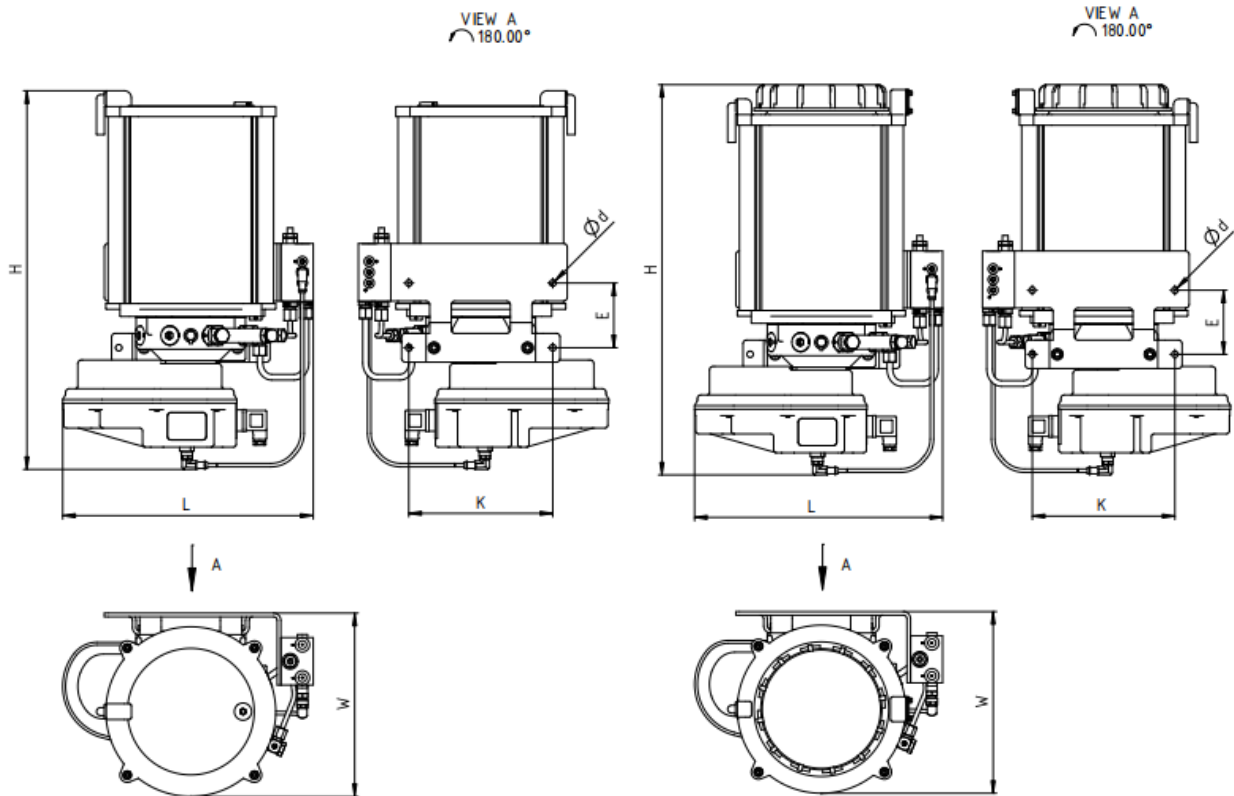
■ **LEP Dual-line Lubrication Pump Dimension**

◇ **DC 24V or AC 230V/50 Hz, 4/6 L tank**



Model	Tank Capacity (L)	Power Supply	Pump Outlet	H (mm)	W (mm)	L (mm)	K (mm)	E (mm)	Ød (mm)
LEP212D...	4	DC 24V or AC 230V/50Hz	2 x G 1/4	430	250	350	200	90	9
LEP212DT...				450					
LEP212PD...	6			520	250	350	200	90	9
LEP212PDT...				540					

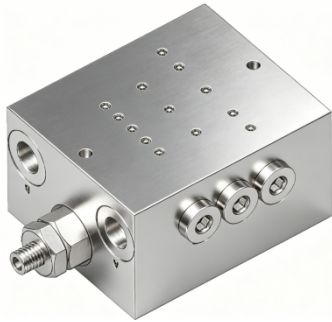
✦ DC 24V or AC 230V/50 Hz, 8/10 L tank



Model	Tank Capacity (L)	Power Supply	Pump Outlet	H (mm)	W (mm)	L (mm)	K (mm)	E (mm)	Ød (mm)
LEP213D...	8	DC 24V or AC 230V/50Hz	2 x G 1/4	530	255	350	200	90	9
LEP213DT...				550					
LEP2110D...	10			560	255	350	200	90	9
LEP2110DT...				580					

■ **XV-250 Directional Valve**

◇ **Technical Data**



<i>Working Pressure</i>	130 ~ 250 bar, adjustable
<i>Preset Pressure</i>	150 bar
<i>Working Flow</i>	18 L/min
<i>Inlet Thread</i>	G 1/4
<i>Outlet Thread</i>	G 1/4
<i>Relief Port Thread</i>	G 1/4
<i>Lubricant</i>	NLGI 0, 1, 2

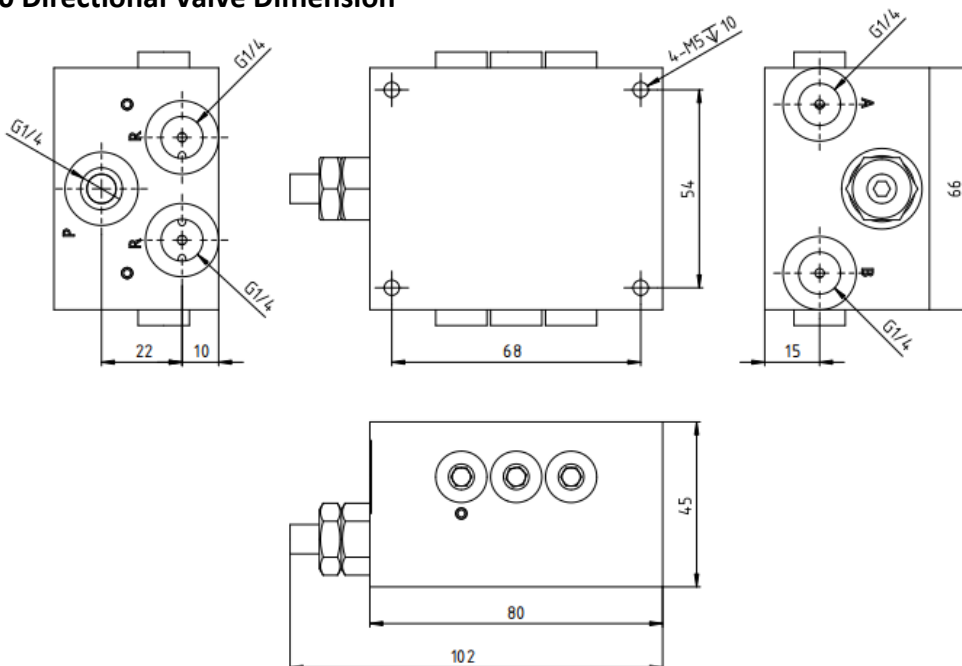
◇ **Product Description**

The XV mechanical directional valve is an essential core component in a dual-line lubrication system. Its maximum switching pressure is 250 bar.

The directional valve can be directly installed with LEP dual-line pump unit or installed in the main pipes on the site. When installation, anyone of two relief ports can be used in term of site situation.

Its function is that when the lubrication pump is operating, it can alternately switch the two main pipelines to be supply pipes or return pipes, thereby ensuring that the entire dual-line lubrication system can operate normally and achieve lubrication functionality.

■ **XV-250 Directional Valve Dimension**



Statement:

Without permission, all or part of the contents in this manual shall not be quoted or copied. We have tried our best to ensure that the contents in this manual are accurate. Our company does not assume any direct, indirect or joint liability for the use of any technology and related products mentioned in this manual without our approval.

Publication No.: INALUBE-LUBE lite/Dualline-01

Version: 1.0

Date: 2026.03

Shanghai INA Machinery Science & Technology Co., Ltd

Room 201, Building D, No.555 Wanfang Road, Minhang District, Shanghai, China

Tel.: +86 21 2042 2806

Mobile: +86 187 1781 3303

Email: sales@inalube.com

Website: www.inalube.com